

Solution description

In a double brick wall and when there is no possibility of filling the air space, the insulation should always be placed on the outer side, in order to coat the entire building and prevent thermal bridges.

When selecting a frame, consider recycled and / or recyclable material, such as fiberglass, which has an excellent thermal and acoustic performance as well as high durability, excluding from the outset the need for maintenance.

The window is double glazed with reinforced insulation, which by its efficient performance reduces the need for mechanical heating systems, allowing a lower power consumption.

1	Glass Saint Gobain Glass
2	Window frame Boavista
3	Paint CIN - Corporação Industrial do Norte, SA
4	Insulation Amorim Isolamentos, SA
5	Ceramic brick Preceram - Indústrias de Construção, SA
6	Mortar Secil Argamassas
7	Deck Banema - Madeiras e Derivados, SA

DOUBLE BRICK WALL
(plan)

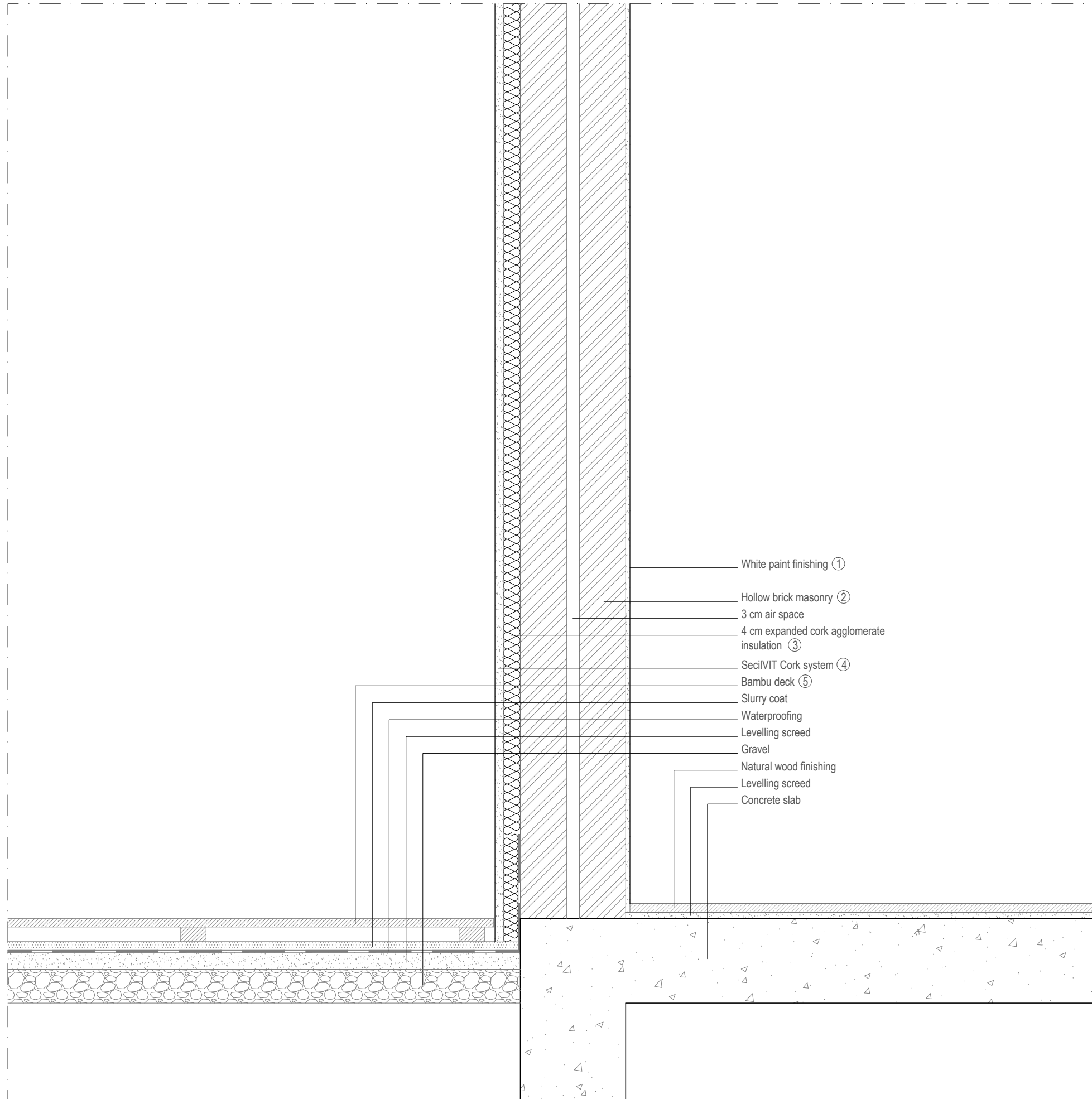


Portal of Sustainable Construction ©

Date
July 2015
Scale
1/10

PC 2

www.csustentavel.com/



Solution description

In a double brick wall, and when there is no possibility of filling the air space, the insulation should always be placed on the outer side, in order to coat the entire building and prevent thermal bridges.

When selecting a frame, consider recycled and / or recyclable material, such as fiberglass, which has an excellent thermal and acoustic performance as well as high durability, excluding from the outset the need for maintenance.

The window is double glazed with reinforced insulation, which by its efficient performance reduces the need for mechanical heating systems, allowing a lower power consumption.

1	Paint CIN - Corporação Industrial do Norte, SA
2	Ceramic brick Preceram - Indústrias de Construção, SA
3	Insulation Amorim Isolamentos, SA
4	Mortar Secil Argamassas
5	Deck Banema - Madeiras e Derivados, SA

DOUBLE BRICK WALL
(section)



Portal of Sustainable Construction ©

Date
July 2015
Scale
1/10

PC 1

www.csustentavel.com/