

# **LINHA NATURE**

**NATURE LINE / LIGNE NATURELLE**

# **CAL E BARRO**

**LIME AND CLAY / CHAUX ET ARGILE**

# **MASSAS DE ENCHIMENTO E DE ACABAMENTO**

**FILLING AND FINISHING  
MASSES / MASSES DE REMPLISSAGE  
ET DE FINITION**



# VANTAGENS DO BARRO

## ADVANTAGES OF CLAY / AVANTAGES DE L'ARGILE

- |   |  |   |
|---|--|---|
| - 0% COV                                    | - 0% VOC                                   | - 0% COV                                    |
| - 100% NATURAL                              | - 100% NATURAL                             | - 100% NATUREL                              |
| - MAIS ECONÓMICO                            | - MORE ECONOMICAL                          | - PLUS ÉCONOMIQUE                           |
| - ISOLAMENTO TERMICO E ACÚSTICO NATURAL     | - THERMAL AND ACOUSTIC INSULATION NATURAL  | - ISOLATION THERMIQUE ET ACOUSTIQUE NATUREL |
| - RETARDADOR DE FOGO                        | - FIRE RETARDER                            | - COUPE-FEU                                 |
| - COMPOSTO POR BARRO E MINERAIS             | - COMPOSED OF CLAY AND MINERALS            | - COMPOSÉ D'ARGILE ET DE MINÉRAUX           |
| - REUTILIZÁVEL                              | - REUSABLE                                 | - RÉUTILISABLE                              |
| - MELHORA O AMBIENTE INTERIOR               | - IMPROVES THE INDOOR ENVIRONMENT          | - AMÉLIORE L'ENVIRONNEMENT INTÉRIEUR        |
| - REDUÇÃO DE ENERGIA                        | - ENERGY REDUCTION                         | - RÉDUCTION D'ÉNERGIE                       |
| - CRIA AMBIENTES SAUDÁVEIS                  | - CREATE HEALTHY ENVIRONMENTS              | - CRÉER DES ENVIRONNEMENTS SAINS            |
| - EXCELENTE ABSORVENTE NATURAL DE HUMIDADES | - EXCELLENT NATURAL ABSORBENT OF MOISTURES | - EXCELLENT ABSORBANT NATUREL DE HUMIDITÉS  |
| - IMPEDE APARECIMENTO DE FUNGOS             | - PREVENTS APPEARANCE OF FUNGI             | - EMPÊCHE L'APPARITION DE CHAMPIGNONS       |
| - PARA INTERIOR E EXTERIOR                  | - FOR INDOORS AND OUTDOORS                 | - POUR L'INTÉRIEUR ET L'EXTÉRIEUR           |

# VANTAGENS DA CAL

## ADVANTAGES OF LIME / AVANTAGES DE LA CHAUX

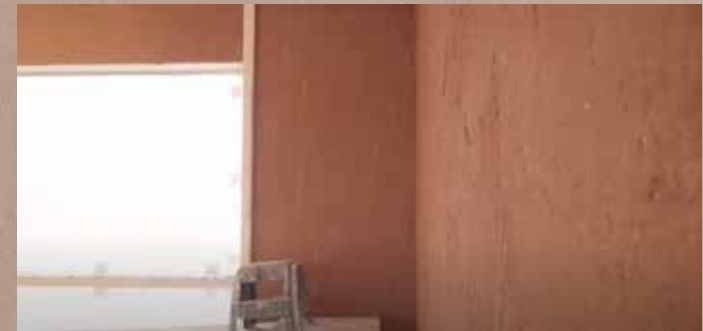
- 0% VOC
- 100% NATURAL
- MAIS ECONOMICO
- COMPOSTO POR CAL E MINERAIS
- REUTILIZÁVEL
- MELHORA O AMBIENTE INTERIOR
- REDUÇÃO DE ENERGIA
- CRIA AMBIENTES SAUDÁVEIS
- EXCELENTE ABSORVENTE NATURAL DE HUMIDADES
- IMPEDE APARECIMENTO DE FUNGOS E BACTÉRIAS

- 0% VOC
- 100% NATURAL
- MORE ECONOMICAL
- COMPOSED BY LIME AND MINERALS
- REUSABLE
- IMPROVES THE INDOOR ENVIRONMENT
- ENERGY REDUCTION
- CREATE HEALTHY ENVIRONMENTS
- EXCELLENT NATURAL ABSORBENT OF MOISTURES
- PREVENTS APPEARANCE OF FUNGI AND BACTERIA

- 0% COV
- 100% NATUREL
- PLUS ÉCONOMIQUE
- COMPOSÉ DE CHAUX ET DE MINÉRAUX
- RÉUTILISABLE
- AMÉLIORE L'ENVIRONNEMENT INTÉRIEUR
- RÉDUCTION D'ÉNERGIE
- CRÉER DES ENVIRONNEMENTS SAINS
- EXCELLENT ABSORBANT NATUREL D'HUMIDITÉS
- EMPÊCHE L'APPARITION DE CHAMPIGNONS ET BACTÉRIES

# CAL E BARRO PROJETADO

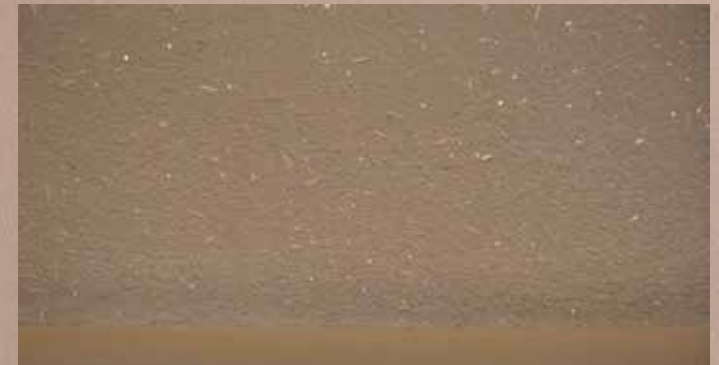
LIME AND DESIGNED CLAY/CHAUX ET ARGILE CONÇUE



ECOPAINT Corporation

# BARRO DE ACABAMENTO

FINISHING CLAY / ARGILE DE FINITION



ECOPAINT Corporation

# CAL DE ACABAMENTO

**FINISHING CLAY / ARGILE DE FINITION**



ECOPAINT Corporation



0% COV

**VOLATILE ORGANIC COMPOUNDS  
COMPOSÉS ORGANIQUES VOLATILS**

ECOPAINT Corporation

0% CIMENTO

0% CEMENT / 0% CIMENT

ECOPAINT Corporation



# REUTILIZÁVEL

**REUSABLE / RÉUTILISABLE**

# REDUÇÃO ENERGÉTICA

ENERGY REDUCTION / RÉDUCTION D'ÉNERGIE

# IMPEDE O APARECIMENTO DE FUNGOS E BACTÉRIAS

PREVENTS THE APPEARANCE OF FUNGI AND BACTERIA  
EMPÊCHE L'APPARITION DE CHAMPIGNONS ET DE BACTÉRIES

ECOPAINT Corporation

# AMBIENTES SAUDÁVEIS

HEALTHY ENVIRONMENTS / ENVIRONNEMENTS  
EN BONNE SANTÉ





# PRÉMIOS AWARDS / PRIX



[greenbuildassociation.org](http://greenbuildassociation.org)

**ECOPAINT** Corporation



# **ECOPAINT Corporation**

**Rua Serafim da Cruz, nº743  
4475-669 Castelo da Maia  
Porto, Portugal**

**+351 229 826 029  
[info@ecopaint-corporation.com](mailto:info@ecopaint-corporation.com)**

**ECOPAINT** Corporation

# POWDER PAINT



0% COV



**ECOPAINT** Corporation

# POWDER PAINT

## POWDER PAINT

Product based on ecological aqueous dispersions (Calcium Hydroxide, Recycled Cellulose and Minerals). Powder Paint is a matte finish paint, indicated preferably for interiors.

This product is sold in powder | 5L ink pack | 15L ink pack



# ADVANTAGES

- Radical reduction of water at the time of production of paint in the factory and in the cleaning of the equipment used.
- Being made up of environmentally friendly products, it won't create any problem at all.
- No smell, the entire tool can be washed with water as well as the packaging used.
- The water from the washing of tools can be dumped on the land without creating any problem, on the contrary, it will help to enrich the land.
- If you do not intend to use the remaining paint, just dilute it a little more and turn to the land
- With this product we help to reduce water consumption when producing this paint, in addition to not creating any problem for the environment, it can also help to enrich and protect agricultural land.

**ECOPAINT** Corporation

# APPLICATION

**POWDER PAINT HAS A MATTE FINISH, INDICATED PREFERABLY FOR INTERIOR**

- Excellent covering power
- Good durability and abrasion resistance
- Excellent quality/price ratio
- Ideal for areas with stains on plaster, plasterboard, painting stands, cork and wood, etc...
- Abrasion resistance
- Available in White and light colors.



**ECOPAINT** Corporation

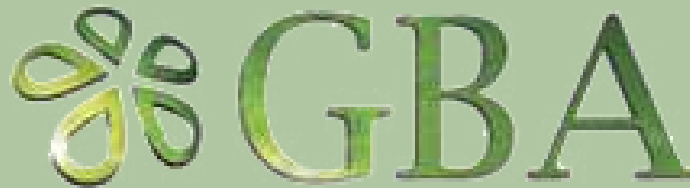
# AVAILABLE PIGMENTS

YOU CAN ADD NATURAL PIGMENTS TO GET OTHER COLORS



**ECOPAINT** Corporation

# AWARDS



[greenbuildassociation.org](http://greenbuildassociation.org)



**ECOPAINT Corporation**



# **ECOPAINT Corporation**

**Rua Serafim da Cruz, n°743  
4475-669 Castelo da Maia  
Porto, Portugal**

**+351 229 826 029**

**[info@ecopaint-corporation.com](mailto:info@ecopaint-corporation.com)**