

Developing connections, building the future.

2026/03/16

Aula aberta PCS
Instalações elétricas em edifícios



Paulo Dinis
917 682 006
dinis.paulo@obo.pt

Rita Santos
913 870 384
santos.rita@obo.pt

Building Connections



Ecological sustainability

We think ahead.

We live ecological sustainability along the value chain.

- Certified to DIN EN ISO 50001 – Energy management and DIN EN ISO 14001 – **Environmental management**
- Utilising complex recycling processes to **reuse 1,600 tonnes** of regenerated **PVC**, thereby reducing **CO2 emissions by 1,900 tonnes** per year
- For over **ten years**, using **100% green energy** at all German locations, thus reducing **CO2 by 9,800 tonnes** per year
- Massive expansion of **photovoltaic systems** to support the operation of our production and infrastructure at **all German and Hungarian** locations



Economic sustainability

We support ideas.

Innovations are the key to success as a company. The spirit of invention, high quality standards and product knowledge are an integral part of OBO.

- **5–10%** of the overall group **turnover flows into the research** and development of new products
- Continuous development of market-driven innovations
- CEO employees actively **participate** in national and international **standardization committees**
- Standardised processes are part of how we ensure the highest quality. These are continually monitored and improved
- Management manual and QM system support the implementation of our standards
- **Certified** according to **DIN EN ISO 9001 – Quality management**



Building Connections

Data: 02/01/2026

Pág.: 3



Facts & figures

You can count on us.

30,000 

products are produced by OBO for electrotechnical infrastructures.

35% 

of all OBO products are less than five years old.

3 

OBO installation areas: Industrial, Building, and Safety and protection.

60 

countries around the world in which OBO is represented.

4,200 

employees around the world.

5,900,000,000 


OBO anchors® have been produced since 1952.

9,800 

tonnes reduction in CO2 emissions per year at our location in Menden.

832 

patents are owned by OBO for its products.

2,000 

kilometres of cable ladders are produced every year at the Menden site.

45% 

less paper use in the last ten years!

15 

years – that is the average length of employment at OBO.

111 

years of enthusiasm! OBO has a long history of success.

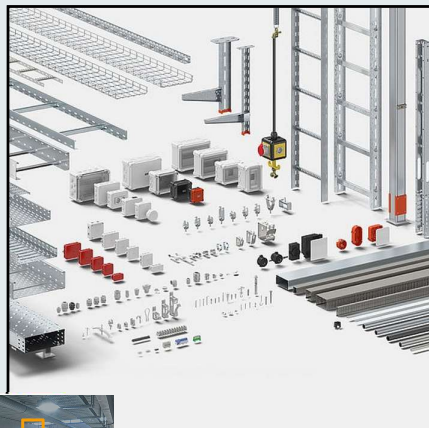
Locations

This is where you can find us around the world.

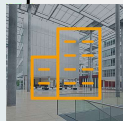


- Subsidiaries
- Production facilities
- Representatives

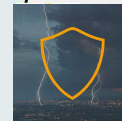
Portfólio



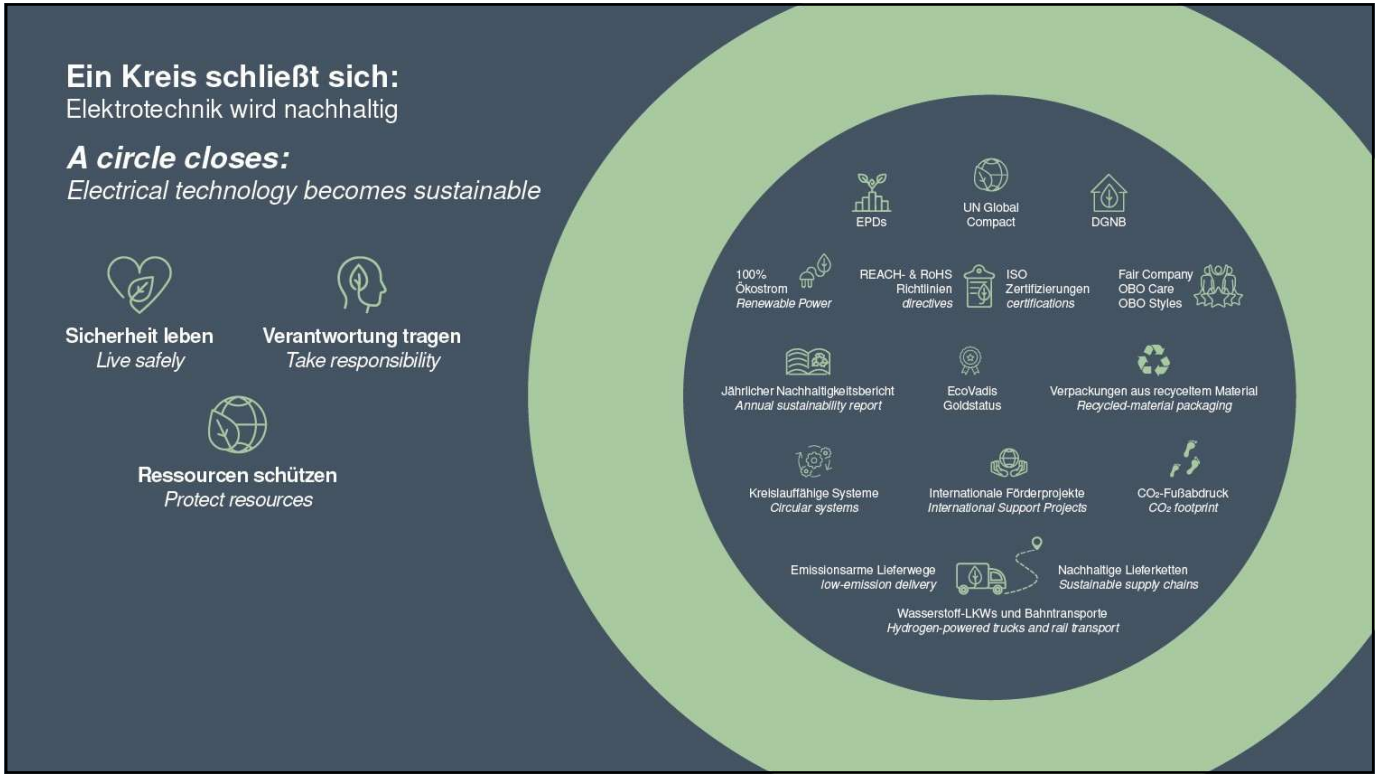
Industrial instalations



Building instalations



Safety and protection instalations



ECO-Line plastic range

OBO EcoLine

- Sustainable material – recycled materials with a proven reduction in CO₂ emissions of **up to 60%**
- **Technical performance** – same load-bearing capacity and compliance with standards as standard products
- **100% system compatibility** – seamless integration into existing OBO products
- **Wide range & ECO line** – sustainable plastic solutions alongside the standard line
- Availability & verification – short delivery times and CO₂ certificate for tenders

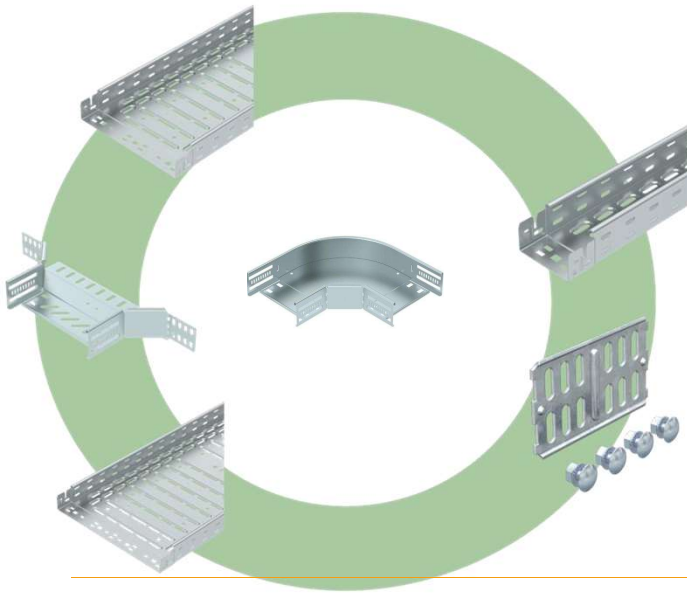
Building Connections

Data: 02/01/2026 Pág.: 8

OBO BETTMANN 30 Jahre

ECO-Line cable support systems (steel range)

OBO
EcoLine



- **CO₂ reduction** – Manufactured from certified CO₂-reduced steel with a proven CO₂ footprint reduction of **up to 60%**
- **Quality** – Unchanged high load capacity, corrosion protection and service life – identical to our standard products
- **Compatibility** – 100% compatible with existing OBO systems, without additional planning or installation costs
- **Proof of sustainability** – delivery with CO₂ product passport and certificate – ideal for tenders, **ESG reporting and green building certifications**



Building Connections

Data: 02/01/2026

Pág.: 9



Environmental Product Declaration (EPD)/ Declaração Ambiental de Produto (DAP) ISO 14025 and EN 15804

Standard for the sustainability of construction works and services.

First published in 2012, it is formally known as EN 15804 + A1

OBO's cable trays and Mesh cable trays have been accompanied by an environmental declaration since April 2014 and have been revised until now.

Environmental Product Declaration (EPD)



Declaration code: EPD-KTS-GB-17.1



Cable support systems

Cable tray system

Environmental Product Declaration (EPD)



Declaration code: EPD-GRS-GB-17.0



Cable support systems

Mesh cable tray system



OBO Bettermann
Produktion
Deutschland
GmbH & Co. KG

Building Connections

Data: 02/01/2026

Pág.: 10



WIN portfolio Device wall boxes



Flush-mounted and cavity Wall boxes

100% halogen-free plastic material

All flush-mounted without membrane entries, made from **80% high-quality recycled products**

All products are entirely manufactured on **production lines powered by green energy.**



Flush-mounted Wall boxes



Cavity wall boxes

Cable support systems



PVC

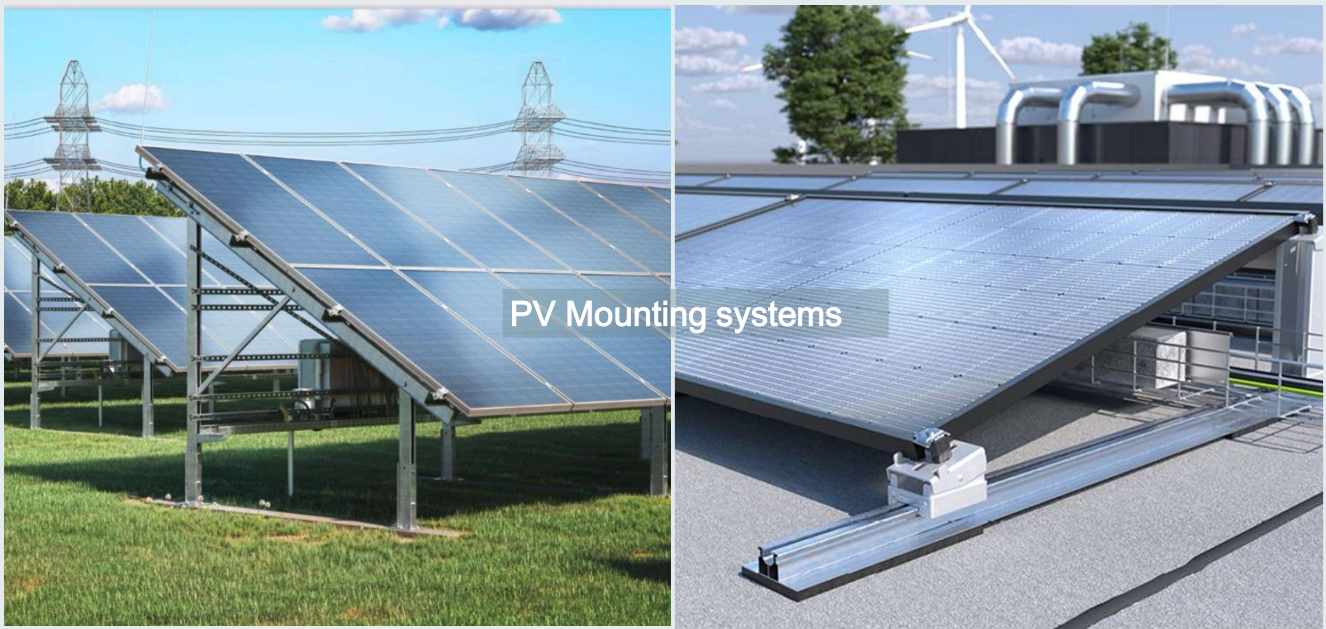


Aluminum

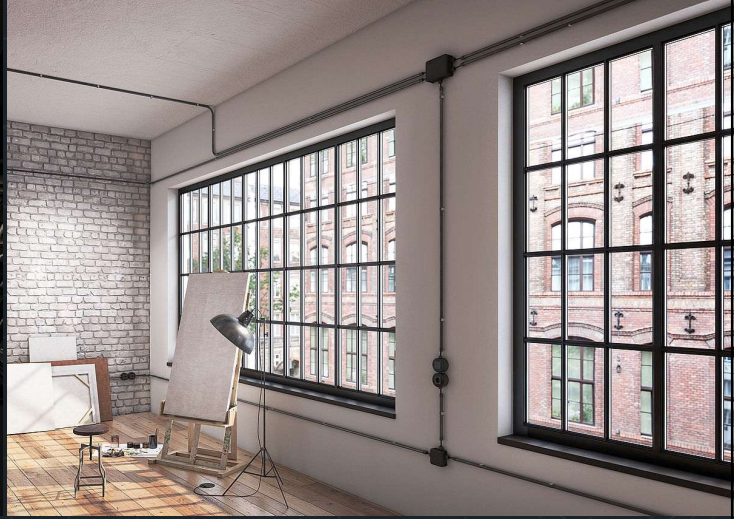
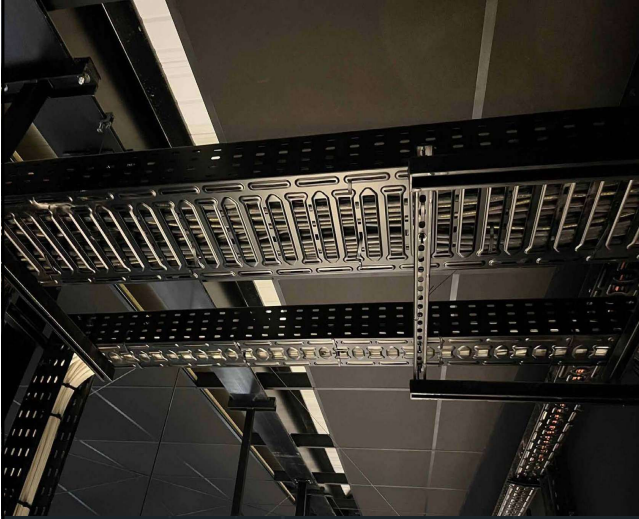
Portfólio



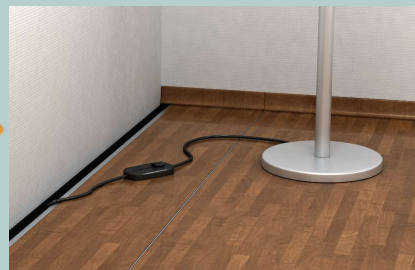
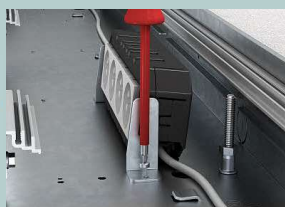
Portfólio



BlackLine



OKB System Step by step



OKB System

With brush bar



Building Connections

Data: 13/03/26 Página: 17

